

ORDINANCE NO. 4170

AN ORDINANCE making an appropriation of \$55,000 to the Arterial Highway Development Fund for 132nd Avenue S.E. at S.E. 240th Street - Signal from a transfer from the County Road Fund; cancelling an appropriation of \$55,000 from 116th Ave. S.E. at S.E. 208th Street - Signal; amending Ordinance No. 3969, Sections 70 and 71, as amended.

BE IT ORDAINED BY THE COUNCIL OF KING COUNTY:

SECTION 1. There is hereby approved and adopted an appropriation in the amount of \$55,000 to the Arterial Highway Development Fund from a transfer from the County Road Fund for the construction of 132nd Avenue S.E. at S.E. 240th Street - Signal, Capital Improvement Project No. 700281.

SECTION 2. An existing appropriation of \$55,000 in the County Road Construction Fund for 116th Avenue S.E. at S.E. 208th Street - Signal, Capital Improvement Project No. 700479 is hereby cancelled to accelerate the project 132nd Avenue S.E. at S.E. 240th Street.

SECTION 3. Ordinance 3969, Section 71, as amended, is hereby amended to read as follows:

Arterial Highway Development Fund	<del>(\$3,934,653)</del>	<u>\$3,989,653</u>
County Road Construction	<del>(\$3,894,878)</del>	<u>\$3,839,878</u>

1  
2  
3  
4  
5  
6  
7  
8  
9  
10  
11  
12  
13  
14  
15  
16  
17  
18  
19  
20  
21  
22  
23  
24  
25  
26  
27  
28  
29  
30  
31  
32  
33

SECTION 4. The project information sheets attached hereto are adopted to amend and revise the King County 1979 Capital Improvement Program and Budget; amending Ordinance No. 3969, Sections 70 and 71, Attachment No. 1, as amended.

INTRODUCED AND READ for the first time this 2nd day of April, 1979.

PASSED this 9th day of April, 1979.

KING COUNTY COUNCIL  
KING COUNTY, WASHINGTON

*Ruby Chow*  
Chairman

ATTEST:

*Rosemary S. Stevens*  
DEPUTY Clerk of the Council

APPROVED this 11th day of April, 1979.

*[Signature]*  
King County Executive

1  
2  
3  
4  
5  
6  
7  
8  
9  
10  
11  
12  
13  
14  
15  
16  
17  
18  
19  
20  
21  
22  
23  
24  
25  
26  
27  
28  
29  
30  
31  
32  
33

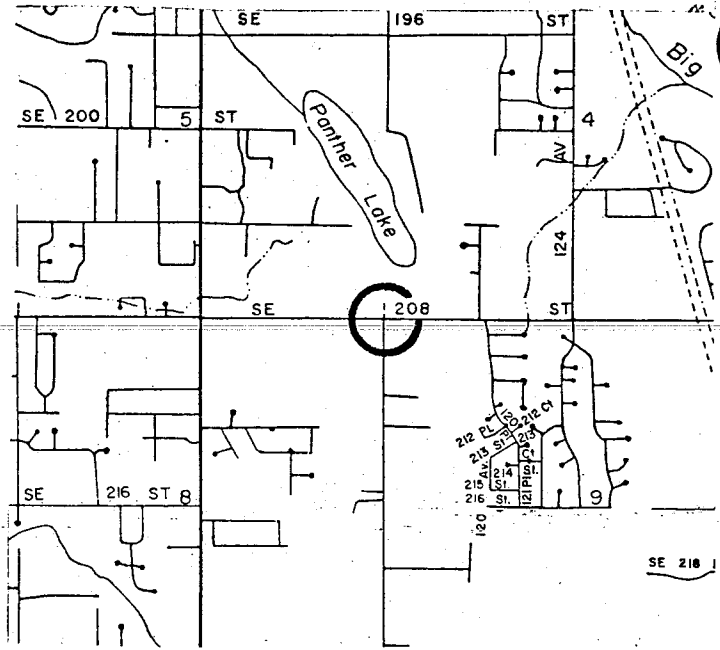
116TH AVENUE SOUTHEAST @ SOUTHEAST 208TH STREET - SIGNAL

Council District: No. 9  
CIP Planning Area: Kent-Auburn

116th Ave. S.E. @ S.E. 208th St. - Signal.

improvements which may include the following  
1) signalization 2) pavement markings, and 3) signal  
sing.

on safety and traffic flows.



- To Be Abandoned
- To Be Merged
- Total Cost Change
- Site Change
- Revenue Change
- Scope Change
- Schedule Change

Status:

\$65,000 Added to program via Ordinance No. 3969.

860 COUNTY ROAD CONSTRUCTION				DEPARTMENT PRIORITY REQUEST					REVISED MARCH 1979	
ROADS - COUNTY ROADS CONST				LOCATION - INTERSECTION 116TH S.E. @ 208TH						
ROAD & STREET CONSTRUCTION				CURRENT PROJECT COST ESTIMATE					65,000	
SPECIALIZED PROJECTS				EXPENDED & APPROPRIATED (INC RECOMMENDED)					10,000	
DISCRETE PROJECTS				FUTURE FUNDING REQUIRED TO COMPLETE PROJECT					55,000	
EXPENDITURES	EXISTING	1979	EXP + BUDGET	*PROGRAM PROJECTIONS - THOUSANDS OF DOLLARS*					OPT/ACCOUNT	PROGRAM
12-31-77	BUDGET RECOMMENDED	RECOMMENDED	+ RECOMMENDED	1980	1981	1982	1983	1984	TOTAL	TOTAL
(A)	(B)	(C)	(A+B+C)							
		10,000	10,000	*					*	10,000
				*					*	
				*					*	10,000
				*					*	
				*					*	10,000
				*					*	
				*					*	10,000
				*					*	
				*					*	10,000
				*					*	
				*					*	10,000
				*					*	
				*					*	10,000
				*					*	
				*					*	10,000
				*					*	
				*					*	10,000
				*					*	
				*					*	10,000
				*					*	
				*					*	10,000
				*					*	
				*					*	10,000
				*					*	
				*					*	10,000
				*					*	
				*					*	10,000
				*					*	
				*					*	10,000
				*					*	
				*					*	10,000
				*					*	
				*					*	10,000
				*					*	
				*					*	10,000
				*					*	
				*					*	10,000
				*					*	
				*					*	10,000
				*					*	
				*					*	10,000
				*					*	
				*					*	10,000
				*					*	
				*					*	10,000
				*					*	
				*					*	10,000
				*					*	
				*					*	10,000
				*					*	
				*					*	10,000
				*					*	
				*					*	10,000
				*					*	
				*					*	10,000
				*					*	
				*					*	10,000
				*					*	
				*					*	10,000
				*					*	
				*					*	10,000
				*					*	
				*					*	10,000
				*					*	
				*					*	10,000
				*					*	
				*					*	10,000
				*					*	
				*					*	10,000
				*					*	
				*					*	10,000
				*					*	
				*					*	10,000
				*					*	
				*					*	10,000
				*					*	
				*					*	10,000
				*					*	
				*					*	10,000
				*					*	
				*					*	10,000
				*					*	
				*					*	10,000
				*					*	
				*					*	10,000
				*					*	
				*					*	10,000
				*					*	
				*					*	10,000
				*					*	
				*					*	10,000
				*					*	
				*					*	10,000
				*					*	
				*					*	10,000
				*					*	
				*					*	10,000
				*					*	
				*					*	10,000
				*					*	
				*					*	10,000
				*					*	
				*					*	10,000
				*					*	
				*					*	10,000
				*					*	
				*					*	10,000
				*					*	
				*					*	10,000
				*					*	
				*					*	10,000
				*					*	
				*					*	10,000
				*					*	
				*					*	10,000
				*					*	
				*					*	10,000
				*					*	
				*					*	10,000
				*					*	
				*					*	10,000
				*					*	
				*					*	10,000
				*					*	
				*					*	10,000
				*					*	
				*					*	10,000
				*					*	
				*					*	10,000
				*					*	
				*					*	10,000
				*					*	
				*					*	10,000
				*					*	
				*					*	10,000
				*					*	
				*					*	10,000
				*					*	
				*					*	10,000
				*					*	
				*					*	10,000
				*					*	
				*					*	10,000
				*					*	
				*					*	10,000
				*					*	
				*					*	10,000
				*					*	
				*					*	10,000
				*					*	
				*					*	10,000
				*					*	
				*					*	10,000